

RF Controller Technical Information.

Kit contains:

RF unit
Key Fob
LED and lead on plug
LED lens
300mm Validator lead
Active when lit label
600mm lead for Jofemar and 300mm extra lead N range supplied F.O.C on request.

The controller works by inhibiting the acceptance of coins when a remote key fob unit is activated. The inhibit can be adjusted up to 60 secs. 30 secs is recommended. The unit will come pre-set to recommended delay.

The time is adjusted by altering potentiometer VR1 on the circuit board. See illustration.

ENBL L.E.D on the circuit board lights when the unit is active (for the timed period). The LED socket is basically an extension of this to enable this to be seen from outside the cabinet.

J1 socket marked M/C on RF unit PCB connects to Machine
J2 socket on RF unit marked MECH connects to Coin mech/validator

SW1 should only be used when the unit needs to be 'paired' with a new Key fob. Key fobs supplied with the unit will be 'pre-paired'. If further Fobs need to be added or a lost one replaced follow the procedure below: (learning a new fob).

The green wire attached to the unit is the aerial and should be left attached to board.

Learning a new Key fob

1. Briefly press the SW1 button
2. Learn LED will illuminate
3. Depress the fob button once
4. Learn light goes out
5. Press the Fob button again
6. Learn LED flashes for approx 10 secs
7. Wait for LED to stop flashing
8. New fob will now operate the system

In case of difficulty call 01566 777701 and ask for technical advice

Azkoyen S5 Electric S8 Electric Azkoyen D6, D8, D12, D16 and Panoramic

SVS RF Controller fitting instructions

RF use two lead sets to connect them. One ribbon cable set for the unit plus a l.e.d lead if a led is fitted to the front of the machine to indicate the machine is active.

There are five different ribbon cable sets and 3 l.e.d. sets. Call SVS for advice or see table attached. **It is essential that you use the correct set or damage will occur.**

1. Ensure power is off before commencing
2. **Warning** incorrect connection or using wrong leads may damage the unit.

Open the machine door, attach unit to machine in the position shown, (note there is no picture for Panoramic) see over, using Velcro tape supplied. Make sure surface is clean.

Lead connections

Azkoyen D and S and Panasonic ranges:

Unplug the lead to the validator/mech and route to RF unit. Plug in to J1. marked M/C. Use other lead provided to connect validator/mech to J2 labelled MECH.

When unit is fitted fit the LED kit if required (see other sheet). Power up machine and test. All coins will be rejected. Press button on remote fob, led will operate and coins will be accepted. Unit will time out after 30secs. (This can be extended to one minute see tech sheet).

Notes.

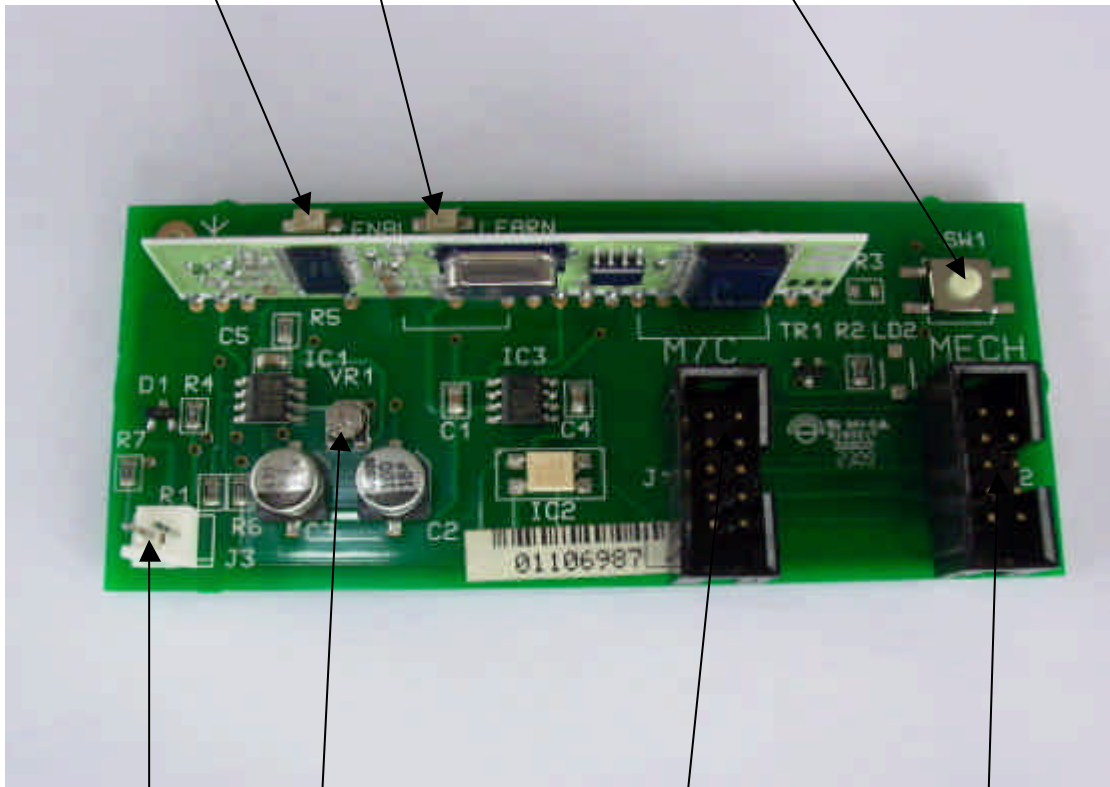
All the machines in this group use the A1 LED Kit

RF Circuit Board Layout

Enable LED

Learn LED

Learn Switch



External LED socket

Time Adjustment

Machine Socket

Mech Socket

Azkoyen N range and Azkoyen N slim range (not changeivers)

SVS RF Controller fitting instructions

RF use two lead sets to connect them. One ribbon cable set for the unit plus a l.e.d lead if a led is fitted to the front of the machine to indicate the machine is active.

There are five different ribbon cable sets and 3 l.e.d. sets. Call SVS for advice or see table attached. **It is essential that you use the correct set or damage will occur.**

1. Ensure power is off before commencing
2. **Warning** incorrect connection or using wrong leads may damage the unit.

Slide out Escrow assembly and fit unit in position shown with Velcro tape supplied. Make sure surface is clean first. See pictures over.

These machines require two new leads as the existing mech/validator lead is not long enough. Replace this lead with a new 300mm lead provided and route the lead to the RF unit and plug in to M/C socket on unit. Plug the other 300mm lead in to MECH position on the unit and route to the mech/validator and plug in.

When unit is fitted fit the LED kit if required (see other sheet). Power up the machine and test. All coins will be rejected. Press button on remote fob, led will operate and coins will be accepted. Unit will time out after 30secs. (This can be extended to one minute see tech sheet).

Notes:

N standard range uses A2 LED Kit

N Slim range uses A1 LED kit

Jofemar range excluding changegivers

SVS RF Controller fitting instructions

RF use two lead sets to connect them. One ribbon cable set for the unit plus a l.e.d lead if a led is fitted to the front of the machine to indicate the machine is active.

There are five different ribbon cable sets and 3 l.e.d. sets. Call SVS for advice or see table attached. **It is essential that you use the correct set or damage will occur.**

1. Ensure power is off before commencing
2. **Warning** incorrect connection or using wrong leads may damage the unit.

Fit RF unit box in position shown, see pictures over.

Remove 4 x screws holding large back panel located below the mech/validator. Remove panel. Unplug the validator lead at both ends and remove it from the enclosure. Re-Plug this lead in to the board position and route it to the RF controller and plug in to J1, marked M/C socket on unit. Plug the new 600mm lead in to J2 marked MECH and route it up to the mech/validator and plug in. Replace validator. Re-fit cover.

When unit is fitted fit the LED kit if required (see other sheet). Power up machine and test. All coins will be rejected. Press button on remote fob, led will operate and coins will be accepted. Unit will time out after 30secs. (This can be extended to one minute see tech sheet).

Notes

Jofemar machines use A1 led kit

Wurlitzer PL8 PL10 PL12 TL8 TL10 TR range Hartings and Sinclair Collis SVS built SC1-4 ranges. (Not changeovers).

RF use two lead sets to connect them. One ribbon cable set for the unit plus a l.e.d lead if a led is fitted to the front of the machine to indicate the machine is active.

There are five different ribbon cable sets and 3 l.e.d. sets. Call SVS for advice or see table attached. **It is essential that you use the correct set or damage will occur.**

1. Ensure power is off before commencing
2. **Warning** incorrect connection or using wrong leads may damage the unit.

Wurlitzer machines.

Open out Escrow on Wurlitzer machines as the RF unit fits on the back , (see pictures over). Make sure surface is clean and fit with Velcro tape supplied.

1. Unplug the coin mech/validator from the machine and re plug it in to the ribbon cable marked MECH.
2. Connect RF lead marked M/C to machine

Note: On IVC machines this is a 'floating' connector, on Elza machines this is the interface on the machine, situated just above escrow.

Harting.

Fit RF unit in position as shown over, with Velcro tape provided.

1. Unplug mech/validator from back of escrow /interface.
2. Connect mech/validator to RF lead marked MECH
3. Connect RF lead marked M/C to interface on rear of escrow.

When unit is fitted fit the LED kit if required (see other sheet). Power up the machine and test. All coins will be rejected. Press button on remote fob, led will operate and coins will be accepted. Unit will time out after 30secs. (This can be extended to one minute see tech sheet).

Notes:

All machine in this range use A3 LED Kits

Cosmos and Silverline machines

RF use two lead sets to connect them. One ribbon cable set for the unit plus a l.e.d. lead if a l.e.d. is fitted to the front of the machine to indicate the machine is active.

There are five different ribbon cable sets and 3 l.e.d. sets. Call SVS for advice or see table attached. **It is essential that you use the correct set or damage will occur.**

1. Ensure power is off before commencing
2. **Warning** incorrect connection or using wrong leads may damage the unit.

Fit RF unit using Velcro tape supplied, see pictures over.

Cosmos:

Switch off machine. Remove validator by releasing spring clips. Unplug validator. Plug machine validator lead in to the adaptor lead supplied and plug in to J1/M/C socket on unit. Connect lead supplied from J2/ MECH socket on unit to validator. **Never use Azkoyen validator leads to connect an RF unit to a Cosmos or G13 validator as there is a reversal of polarity and the unit will be damaged.**

Fit RF unit using Velcro tape supplied, making sure surface is clean.

Silverline:

Fitting is similar to COSMOS but the validator has to be unscrewed to remove. This is a Munzprufer validator, (very similar to NRI G13). It again has reversed polarity. **Never use Azkoyen validator leads to connect a RF unit as the unit will be damaged.** Positions for the RF unit are shown on the rear of this sheet.

When unit is fitted fit the LED kit if required (see other sheet). Power up the machine and test. All coins will be rejected. Press button on remote fob, led will operate and coins will be accepted. Unit will time out after 30secs. (This can be extended to one minute see tech sheet).

Notes:

Machines in this group all use A3 led set

Recommended fitting positions for controller.

Azkoyen D series 12



Azkoyen D series 6/8



Azkoyen S series



The following machines use the same ribbon cables, (not led cables) Azkoyen D range Azkoyen S range (not battery) and Azkoyen P range.

Recommended fitting positions for controller.

N Series



N Slim



Recommended fitting positions for unit.

Jofemar



Recommended fitting position for unit.

Harting



SC1 and Wurlitzer PL



Machines with Mars MS range validators ie Harting 49 step and 5 V
Wurlitzer IVC and Elza are covered by this set of ribbon cables.

Recommended fitting position for unit.

Cosmos



Silverline



Both these machines use the same ribbon cables and LED cables.

Active when lit LED. Optional fit

Place the 'Active when lit' sticker in the position shown. Peel out the centre hole. Carefully drill in the centre of the exposed hole with a 6.3mm or ¼ inch drill. Insert the lens cap provided in the hole from the outside. Use support spacer on inside of cabinet if required on S range Azkoyen and Metal (Non Clad machines) like PL Wurlitzer and Harting.

Plug the LED lead in to the white 2 way socket on the unit. Route and secure the lead over or around the columns, (behind them) to the door on the hinge side, allowing a small cable loop to allow the door to open. Use cable ties if required to 'piggy back' on to existing looms. Press fit the green LED in to the lens from the rear.

Recommended fitting positions for 'Active when lit' labels.

See over.

When the machine is activated the l.e.d. will illuminate while the machine is active.

Active when lit LED. Optional fit

Recommended fitting positions for 'Active when lit' labels.

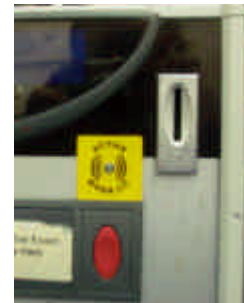
D range



N ranges



N Slim



Jofemar



Azkoyen S types



Cosmos



Silverline



Wurlitzer PL



SC1



Harting



These are suggested positions for the L.E.D that have been tried by Sureline and do not foul or interfere with other components. They are suggestions. Customers may have preferred options

Order Form for Radio Frequency controllers

Radio frequency controller kit applications

Lead Set	Machine Group Covered	LED Kit	No. of Machines
	1 Azkoyen D range	A1	
	1 Azkoyen S range	A1	
	1 Azkoyen Panasonic	A1	
	2 Azkoyen N Standard range	A2	
	2 Azkoyen N Slim	A1	
	3 Jofemar Argos 7 and 11	A1	
	4 Harting Ranges	A3	
	4 Wurlitzers PL	A3	
	4 Sinclair Collis SC1/2	A3	
	4 Sinclair Collis SC3/4	A3	
	5 Cosmos	A3	
	5 Silverline	A3	
	Total number of Kits		- -

There are 5 x different ribbon cable sets and 3 x l.e.d.kits. The combinations required are shown above. Please list the number of machines of each type and we will work out what you require. Kits will come labelled and bagged ready to fit.